

Crown Canopy Assembly - Badges Decals Applications

WORK INSTRUCTION



Department	Canopy Assembly	DATE	30 September 2015	Instruction No.	WI 04017
Process	Badges & Decals	ISSUE	1	PAGE	1 of 2
Activity No	17	AUTHOR	Kevin Fox		

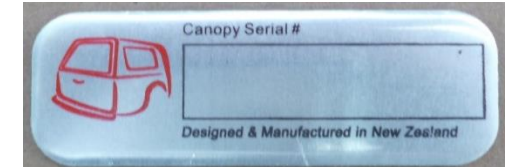
No	Operation	Tools, Materials, Parts & Process
----	-----------	-----------------------------------

17.01

Prepare Tools, Materials & Parts:



Side Badge location jig (reversible)



Inspection Serial Label YC-15-DECAL-10



Accessory Solutions Decal - 65mmx30mm YC-15-DECAL-C3



Crown Canopy Logo - Moulded Side Badge YC-15-DECAL-C1



Crown Rear Door Badge YC-15-DECAL-C4

Sticker Dry Fit Decal (YC-15-DECAL-DRY)



Crown Rear Door Badge Location Jig

Crown Canopy Assembly - Badges Decals Applications

WORK INSTRUCTION



Department	Canopy Assembly	DATE	30 September 2015	Instruction No.	WI 04017
Process	Badges & Decals	ISSUE	1	PAGE	2 of 2
Activity No	17	AUTHOR	Kevin Fox		

No	Operation	Tools, Materials, Parts & Process
17.02	<p>A) Apply Accessory Solutions Decal - 65mmx30mm (YC-15-DECAL-C3) on the bottom left hand corner of the Canopy</p> <p>B) Record the canopy serial number & apply Inspection Serial Label (YC-15-DECAL-10) on the inside right hand side of the canopy - Ensure good orientation.</p> <p>C) Apply Crown Canopy Logo - Moulded Side Badge (YC-15-DECAL-C1) on the left and right hand side of the canopy using the special jig to align the badge.</p> <p>D) Apply Crown Rear Door Badge (YC-15-DECAL-C4) on the rear door using the special jig to align the badge.</p> <p>E) Put dispatch details in see through pouch and attach on the inside of the rear door bottom right hand side</p> <p>F) If any rear door or window is dry fitted apply "Sticker Dry Fit Decal" (YC-15-DECAL-DRY) to the glass</p>	<div style="display: flex; flex-wrap: wrap; justify-content: space-around;"> <div style="width: 45%;"> </div> <div style="width: 45%;"> </div> <div style="width: 45%;"> </div> <div style="width: 45%;"> </div> <div style="width: 45%;"> </div> <div style="width: 45%;"> </div> </div>