



# ONE - POINT LESSON

OPL- CRWN-030



- Basic Knowledge / SOP
- Workmanship Technique
- Problem
- Improvement

**Description :** Special fitting instructions for securing canopy edge trim on MI41 canopy

1) Cut & terminate Canopy Edge Trim at front of the canopy as shown in the photo

2) Secure the edge trim using 8 x 5/8 Mushroom Pozi Black screw

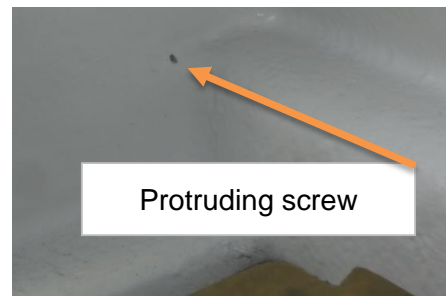


YC-11-85/8BC  
8 x 5/8 Mushroom Pozi Black



3) In the event that the screw protrude through the other side of the shell - remove any sharp edges and touch up using white paint or flow coat

White touch up paint



Touch up after removing sharp edges

